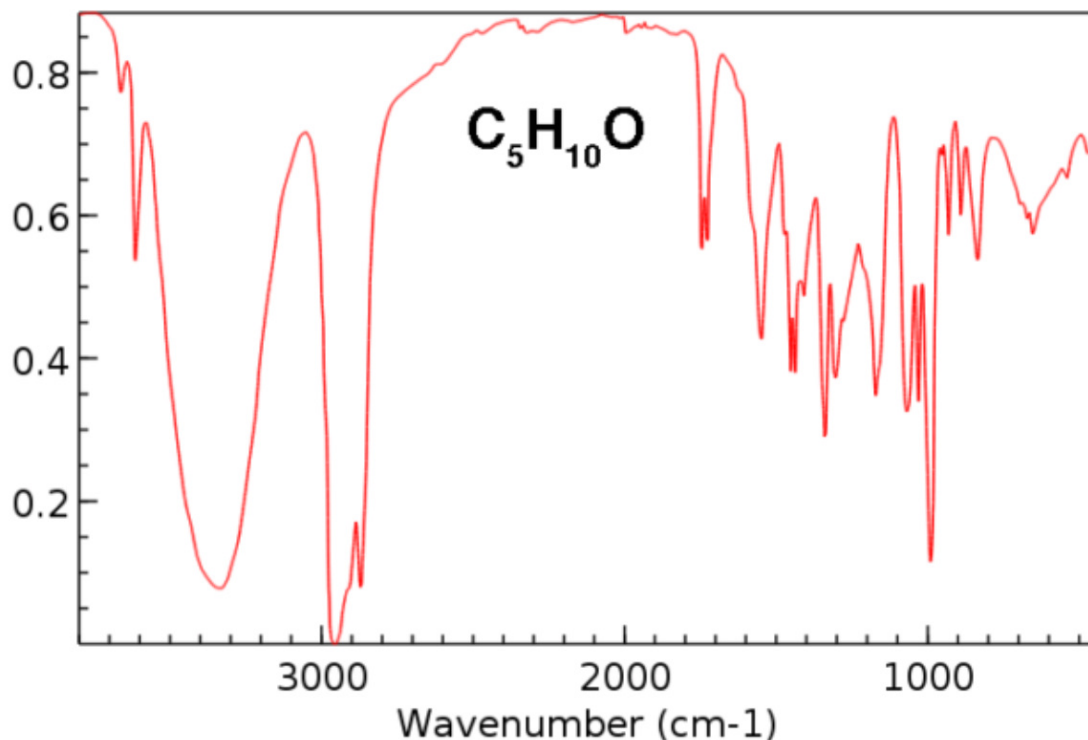
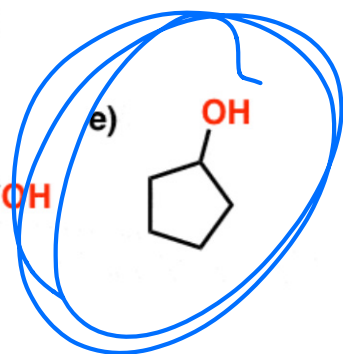
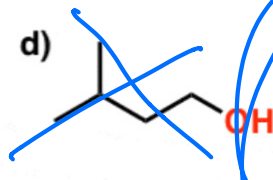
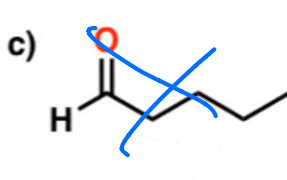
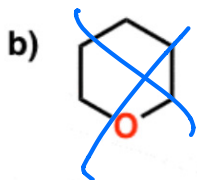
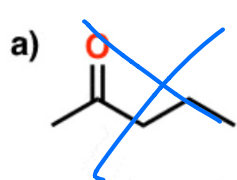


Which of these molecules best corresponds to the IR spectrum below?



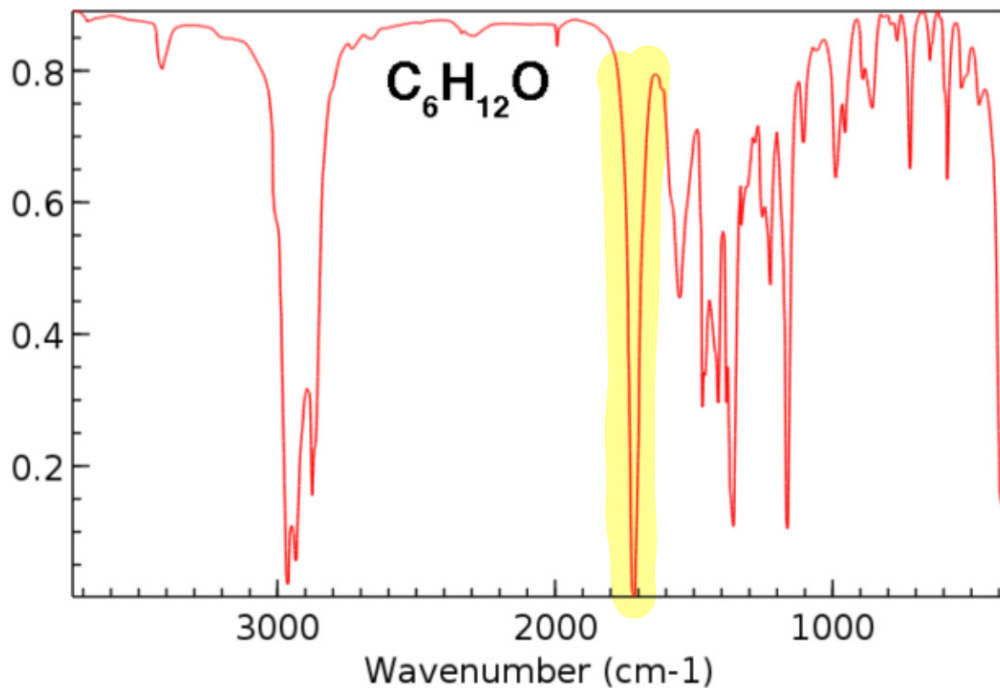
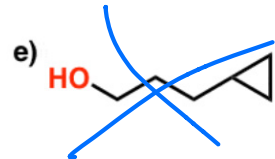
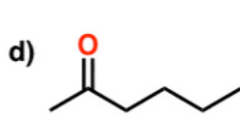
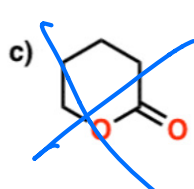
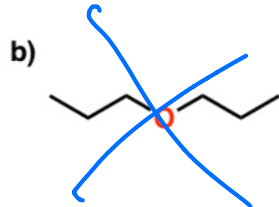
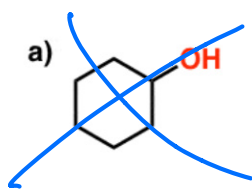
$$IHD = \frac{2C + 2 + N - H - X}{2} = 1$$

* 1 ring or π bond

"blob" at 3300 cm^{-1}

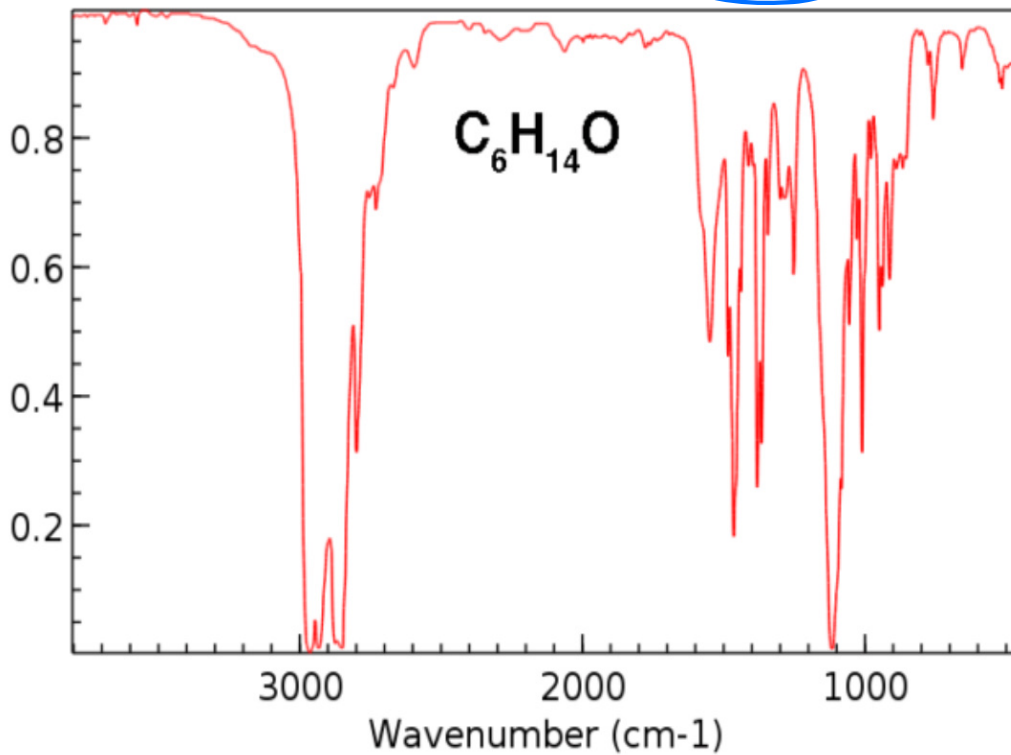
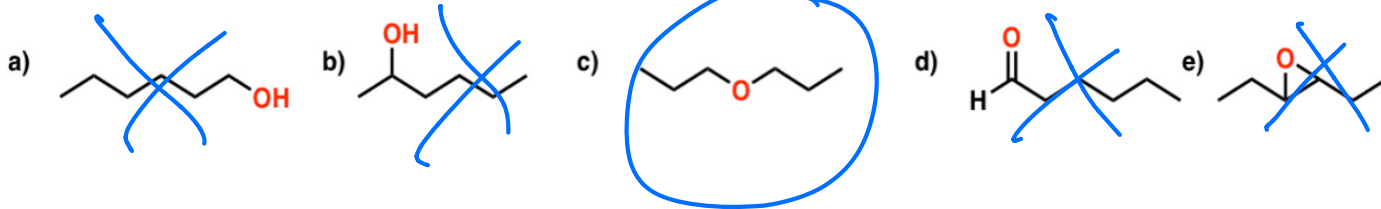
* alcohol

Which of these molecules best corresponds to the IR spectrum below?



$IHD = 1$

Which of these molecules best corresponds to the IR spectrum below with molecular formula $C_6H_{14}O$?



$IHD = 0$

Which of these molecules best corresponds to the IR spectrum below?

